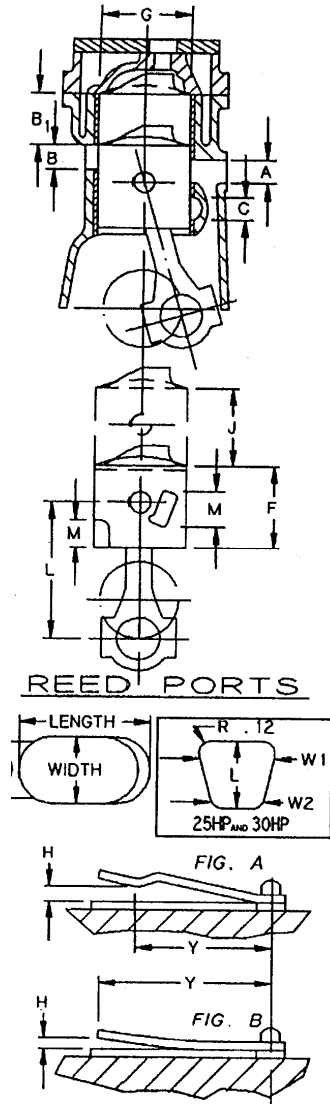
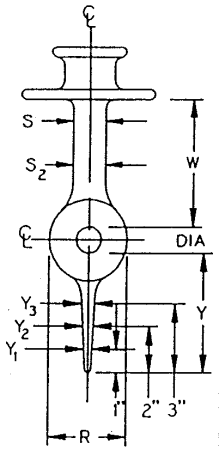
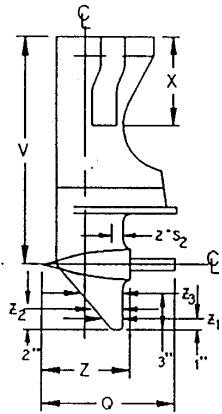


RACE CLASS: SST-200



MANUFACTURER				MERCURY Racing				
ADVERTISED SALES NAME				SST - 200				
CLASS-DISPLACEMENT MAX			in ³	SST 200 153.0				
NUMBER OF CYLINDERS				V-6				
MIN. VOLUME OF COMBUSTION CHAMBER (Flat Plate Volume)			Min. cm ³	51		See Note # 5		
CARBURETOR	VENTURI	±.005	in	N/A				
	BORE	±.020	in	2.750				
	QUANTITY PER ENGINE			1				
POWERHEAD SPECIFICATIONS	G	CYLINDER BORE	±.005	in	3.501			
	J	PISTON STROKE	±.011	in	2.650			
	L	ROD LENGTH	±.006	in	5.500			
	K	DECK HEIGHT	±.008	in	8.354			
	F	PISTON LENGTH	±.030	in	2.748			
	M	PORT HEIGHT	±.030	in	N/A			
	NUMBER OF PORTS PER CYLINDER	A	TRANSFER		5			
		B	EXHAUST		1			
		C	PISTON		N/A			
	PORT HEIGHT	A	TRANSFER	±.020	in	N/A		
		B	EXHAUST	±.020	in	N/A		
		B ₁	EXHAUST		in	See Chart on Page 3		
		C	PISTON	±.035	in	NA		
	PORT TIMING	A	TRANSFER		in	See Chart on Page 3		
		B	EXHAUST		in	See Chart on Page 3		
		C	PISTON	±2°	ATC	N/A		
	REED BLOCK (ONE CYLINDER)	# OF PORTS				10		
		LENGTH x WIDTH SIZE OF PORTS		MAX	in	1.240 x 0.800		
		REED MAT'L				White Composite		
		REED THICKNESS		±.002	in	0.020		
H		REED STOP HGT.	MAX	in	N/A			
Y		CHECKING DIS.	±.030	in	N/A			
WEIGHT (ONE SET)	FLYWHEEL		MIN	lbs	14.5			
	PISTONS, RINGS, ROD, WRIST PIN, SPACERS, BEARINGS		MIN	lbs	See Chart on Page 3			

RACE CLASS: SST 200



MANUFACTURER				Mercury Racing			
GEARCASE MODEL IDENTIFICATION				IV SSM R/L			
ADVERTISED SALES NAME				SST-200 XS			
GEARCASE SPECIFICATIONS	GEAR RATIO:			15:17			
	X	Pipe length from base gasket to exit	±.2	in	9.4 and 10.5		
	Q	TORPEDO LENGTH (W/ PROPSHAFT)	MAX.	in	22.7		
	R	TORPEDO WIDTH	MIN	in	2.54		
	S	STRUT WIDTH	MIN	in	1.57		
	S ₂	STRUT WIDTH (2" FORWARD OF TRAILING EDGE)	MIN	in	NA		
	W 1	DIS. FROM PROPSHAFT TO MOUNTING FLANGE	±.2	in	8.86		
	Y	DIS. FROM BOTTOM OF PROP SHAFT TO BOTTOM OF SKEG	±.2	in	TEMPLATE		
	Z	TORPEDO LENGTH (casting)	MAX	in	17.7		
	V	PROPSHAFT CENTERLINE TO POWERHEAD BASE	±.2	in	21.84		
	Y ₁	SKEG THICKNESS	MIN	in	TEMPLATE	See Template	
	Y ₂	SKEG THICKNESS	MIN	in	TEMPLATE		
	Y ₃	SKEG THICKNESS	MIN	in	TEMPLATE		
	Z ₁	SKEG THICKNESS	±.2	in	TEMPLATE		
	Z ₂	SKEG THICKNESS	±.2	in	TEMPLATE		
Z ₃	SKEG THICKNESS	±.2	in	TEMPLATE			
DIA	PROPSHAFT DIA	±.1	in	1.06			

Notes:

1. Engine MUST be raced as homologated, with flywheel cover in place.
2. ECU ID, Cal # 8M8022255, RPM Limit 8000
3. ECU can be read with CDS or DDT version 1.31 p/n 91-880118A04
4. At any event, the Referee can request you trade ECUs with other competitors. You may not get yours back.
5. Volume of combustion chamber measured with flat plate with air injector and spark plug installed.
6. Straight machine cut in rod slot area. No blending or grinding
7. Machined exhaust chest. No blending or grinding
8. All ports hand chamfered.
9. Fuel Pressure 110 PSI reference. Air Injectors are Grey in color. Injector removal tool 91-883521
10. Flywheel cover air inlet hole 4.75 Max
11. The V-6 crankshaft centerline to crankcase/intake manifold surface to be 4.42±0.01 inches.
12. SST-200 exhaust tubes must each have one 0.50±0.01 inch diameter exhaust relief hole.

Date: 10/28.2009

Manufacturer: Mercury Marine

Model Year: 2010

Model: SST-200 XS

Page: 3

13. SST 200 exhaust tube plate water dump holes: 2 holes @ 0.50+/-0.01 diameter (or 2 holes plugged, one solid & one with a 0.140+/-0.01 diameter thru hole) and a triangle of 1.385 x .730.

13. Gear case Skeg Specs refer to Mercury Racing Inspection Template 91-840671. Gearcase must meet Spec sheet and Template specs.

14. Engine must race the drive shaft housing (studs down) engine is homologated with. Older (studs up) driveshaft housings are not permitted.

Table 3 MY2010

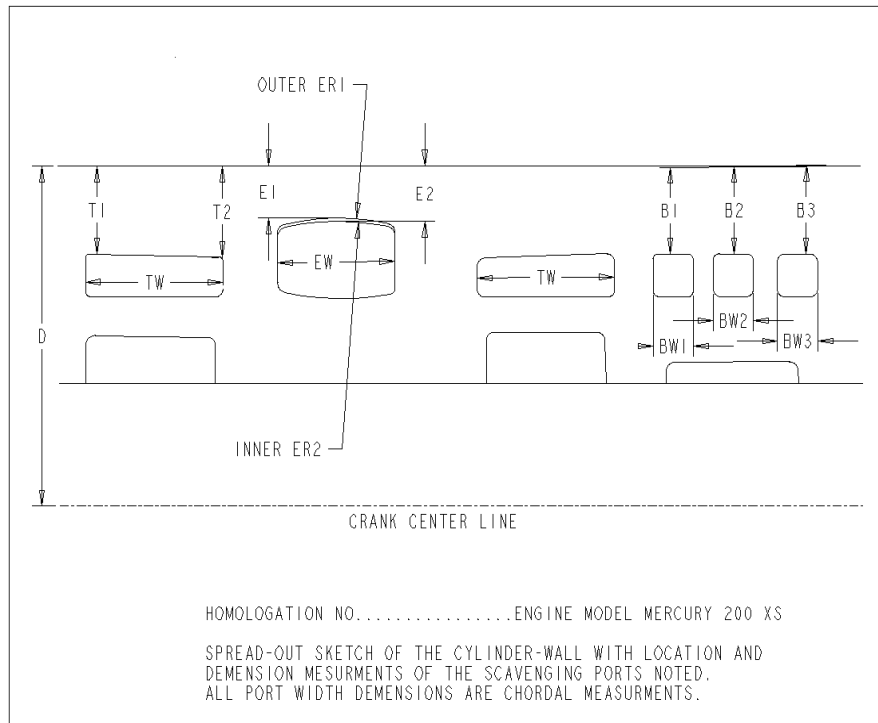


Table 3 Specs

Features :	Engine Model: 200 XS / SST 200
Boost Ports	3
B1	2.205 +/- 0.02
B2	2.205 +/- 0.02
B3	2.205 +/- 0.02
BW1	0.660 +/- 0.04
BW2	0.900 +/- 0.04
BW3	0.660 +/- 0.04
Deck Height	
D	8.354 +/-0.008

Exhaust	1
E1	1.525 +/- 0.02
E2	1.620 +/-0.02
ER1	3.50 +/- 0.08
ER2	2.00 +/-0.08
EW	2.340 +/- 0.04

Transfer Ports	2
T1	2.210 +/-0.02
T2	2.250 +/-0.02
TW	1.645 +/- 0.04

200 XS Engine Components Min.	Grams	Oz	Lbs
Connecting Rod	330 Min.	11.6	
Wrist Pin	101	3.56	
Wrist Pin Needle Bearings	16	0.564	
Wrist Pin Thrust Washers	7	0.246	
Wrist Pin Circlips	1.5	0.052	
Piston	530	18.69	
Piston Rings (2)	16	0.564	
Flywheel (with nut and washer)	6350	224	14.00
Crankshaft with bearings and seal rings	11793	416	27.0

WARNING! FOR INSPECTION ONLY! These specifications are not intended as a guide for modification or "blueprinting" and are subject to change as needed.

Date: 10/28.2009

Model Year: 2010

Manufacturer: Mercury Marine
Model: SST-200 XS
Page: 4

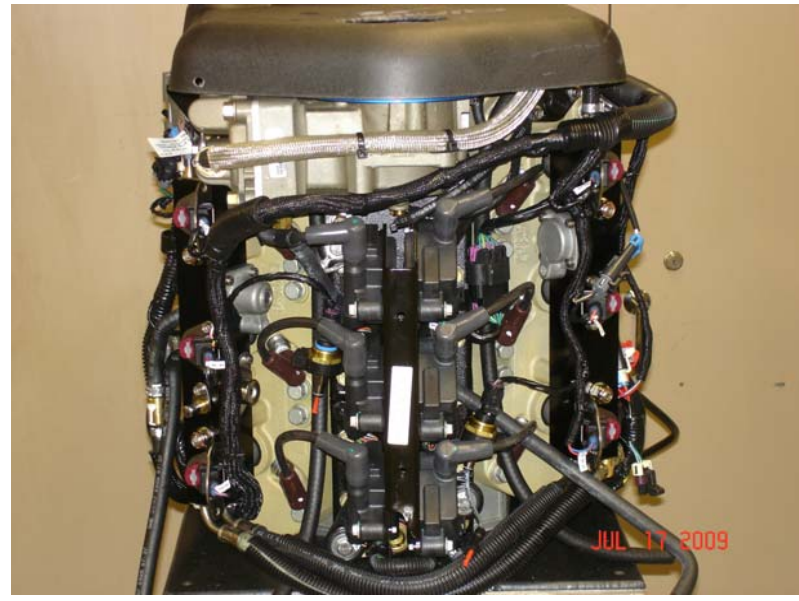


WARNING! FOR INSPECTION ONLY! These specifications are not intended as a guide for modification or "blueprinting" and are subject to change as needed.

Date: 10/28.2009

Model Year: 2010

Manufacturer: Mercury Marine
Model: SST-200 XS
Page: 5

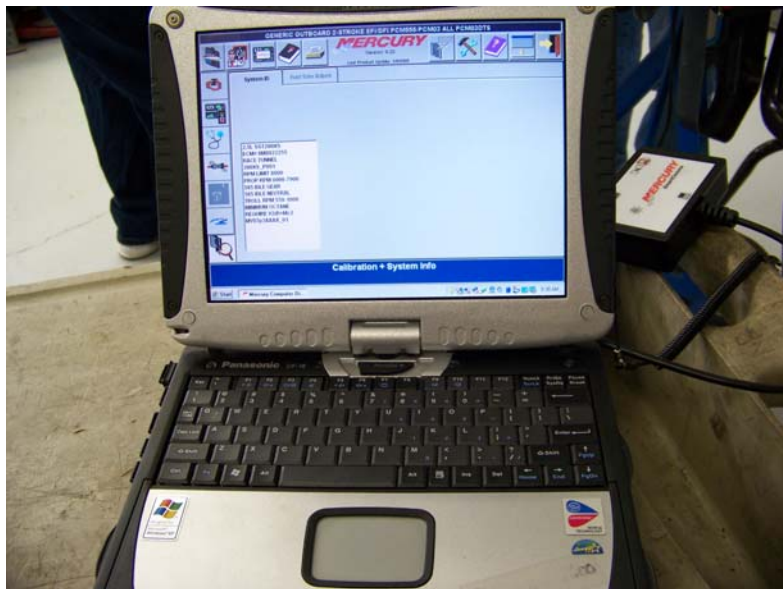
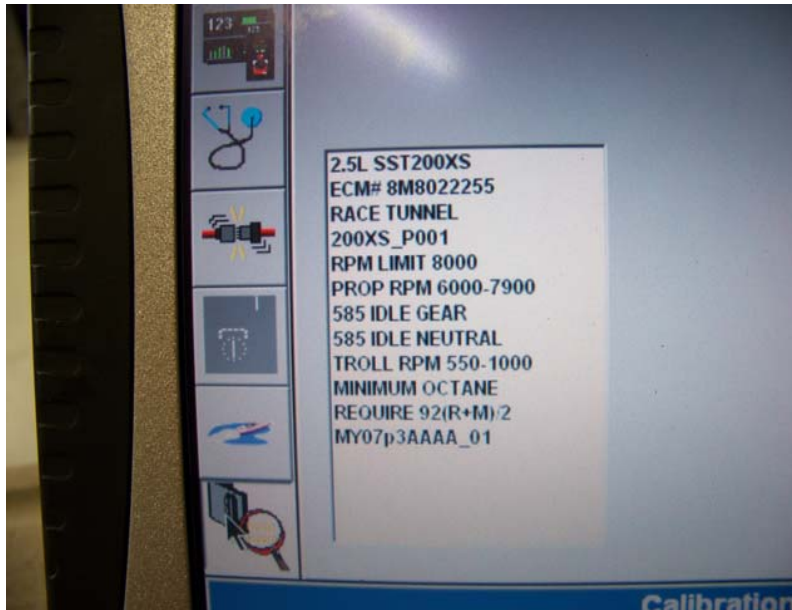


WARNING! FOR INSPECTION ONLY! These specifications are not intended as a guide for modification or "blueprinting" and are subject to change as needed.

Date: 10/28.2009

Model Year: 2010

Manufacturer: Mercury Marine
Model: SST-200 XS
Page: 6



WARNING! FOR INSPECTION ONLY! These specifications are not intended as a guide for modification or "blueprinting" and are subject to change as needed.

Date: 10/28.2009

Model Year: 2010

Manufacturer: Mercury Marine
Model: SST-200 XS
Page: 7



WARNING! FOR INSPECTION ONLY! These specifications are not intended as a guide for modification or "blueprinting" and are subject to change as needed.

Date: 10/28.2009
Model Year: 2010

Manufacturer: Mercury Marine
Model: SST-200 XS
Page: 8

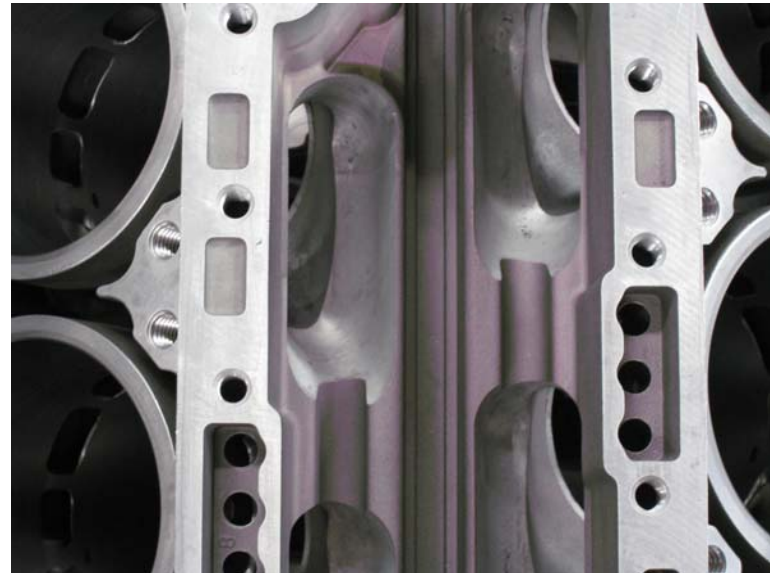


WARNING! FOR INSPECTION ONLY! These specifications are not intended as a guide for modification or "blueprinting" and are subject to change as needed.

Date: 10/28.2009

Model Year: 2010

Manufacturer: Mercury Marine
Model: SST-200 XS
Page: 9

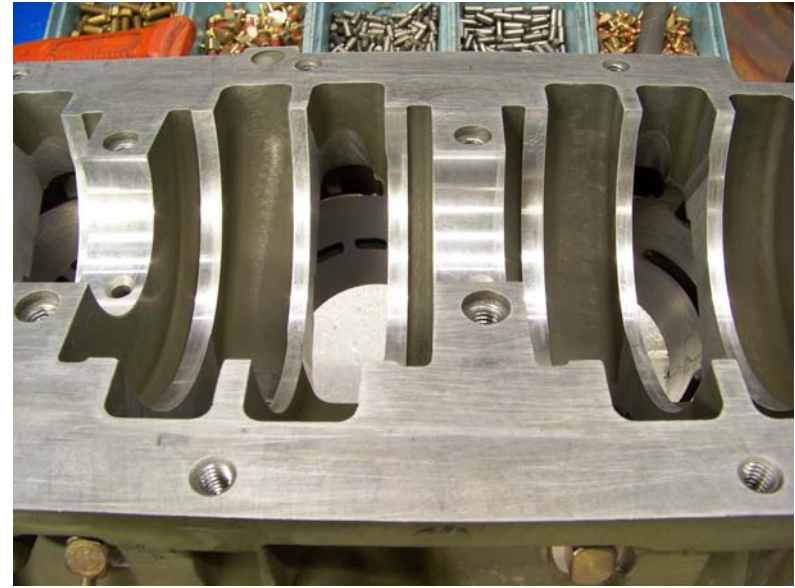
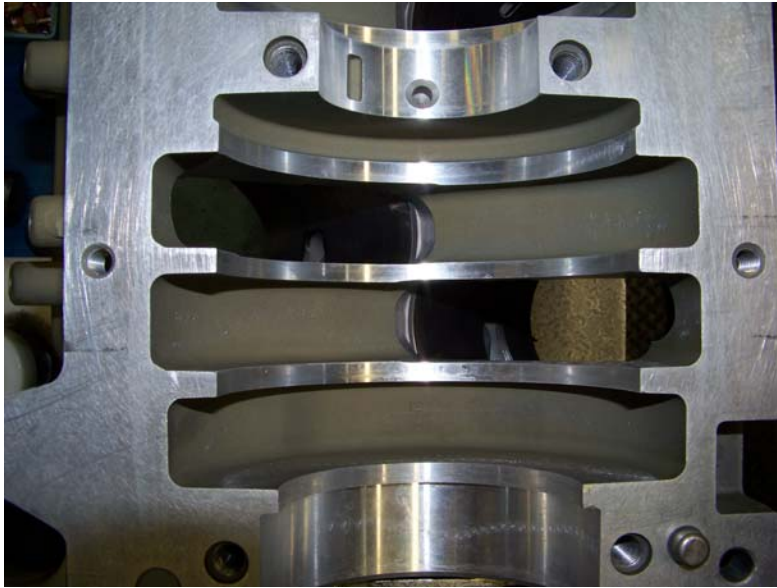


WARNING! FOR INSPECTION ONLY! These specifications are not intended as a guide for modification or "blueprinting" and are subject to change as needed.

Date: 10/28.2009

Model Year: 2010

Manufacturer: Mercury Marine
Model: SST-200 XS
Page: 10

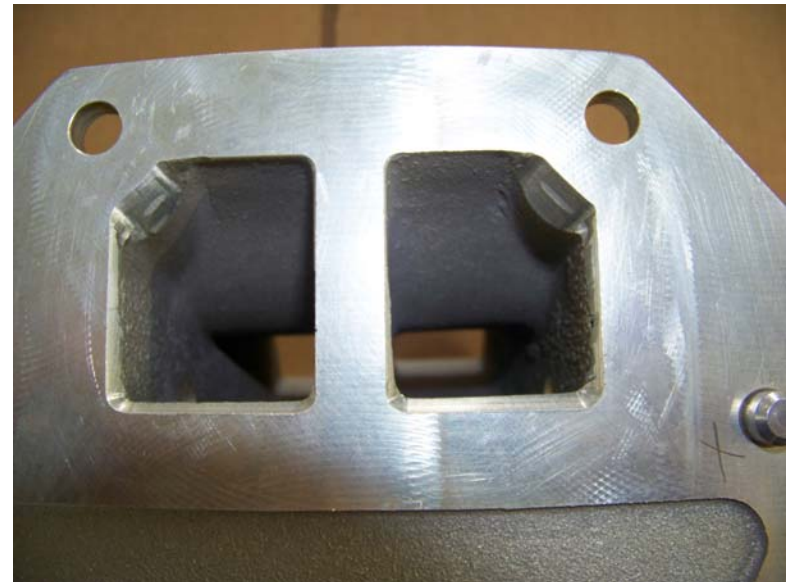


WARNING! FOR INSPECTION ONLY! These specifications are not intended as a guide for modification or "blueprinting" and are subject to change as needed.

Date: 10/28.2009

Model Year: 2010

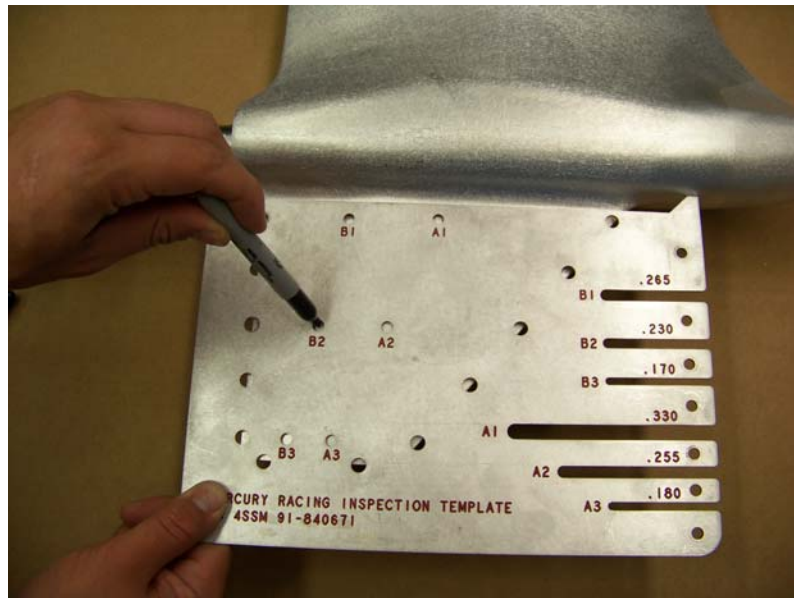
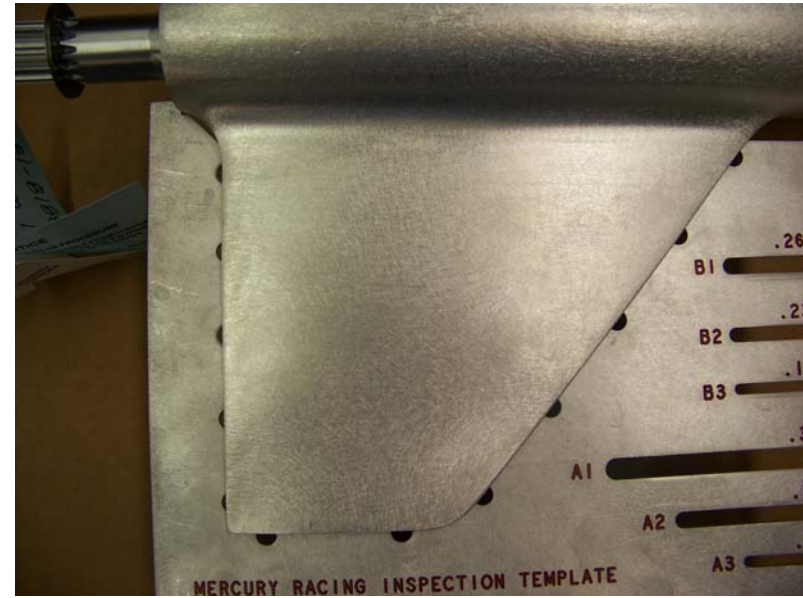
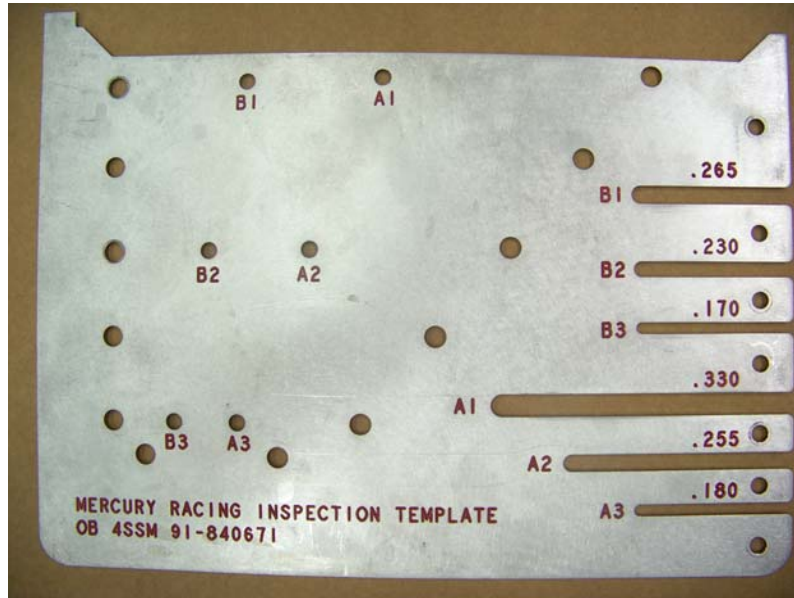
Manufacturer: Mercury Marine
Model: SST-200 XS
Page: 11



WARNING! FOR INSPECTION ONLY! These specifications are not intended as a guide for modification or "blueprinting" and are subject to change as needed.

Date: 10/28.2009
Model Year: 2010

Manufacturer: Mercury Marine
Model: SST-200 XS
Page: 12

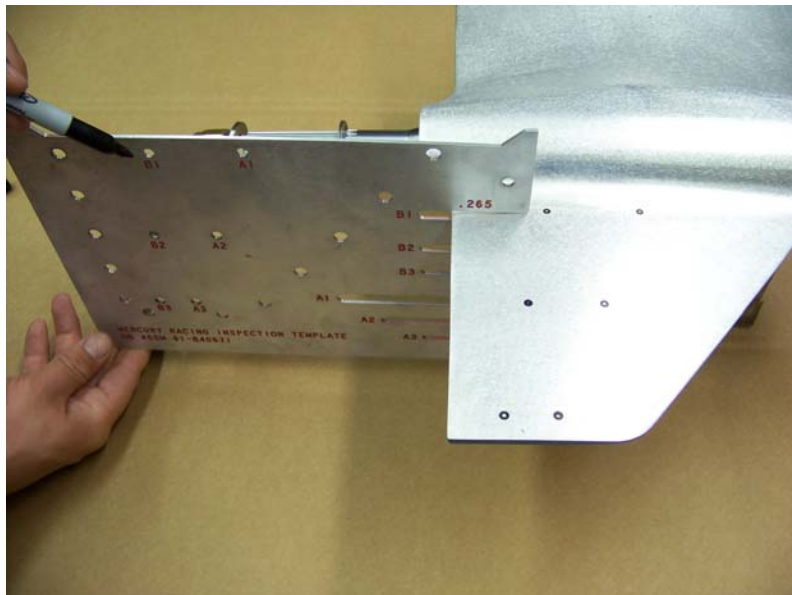
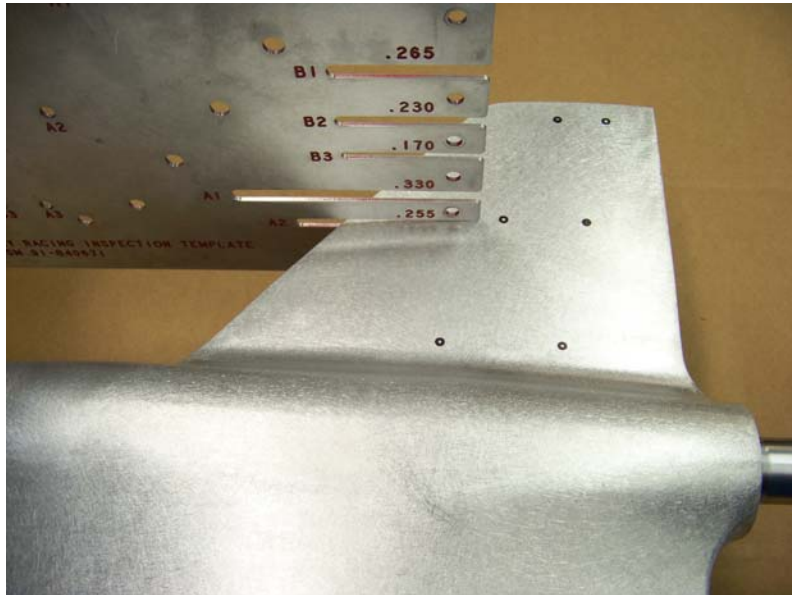


WARNING! FOR INSPECTION ONLY! These specifications are not intended as a guide for modification or "blueprinting" and are subject to change as needed.

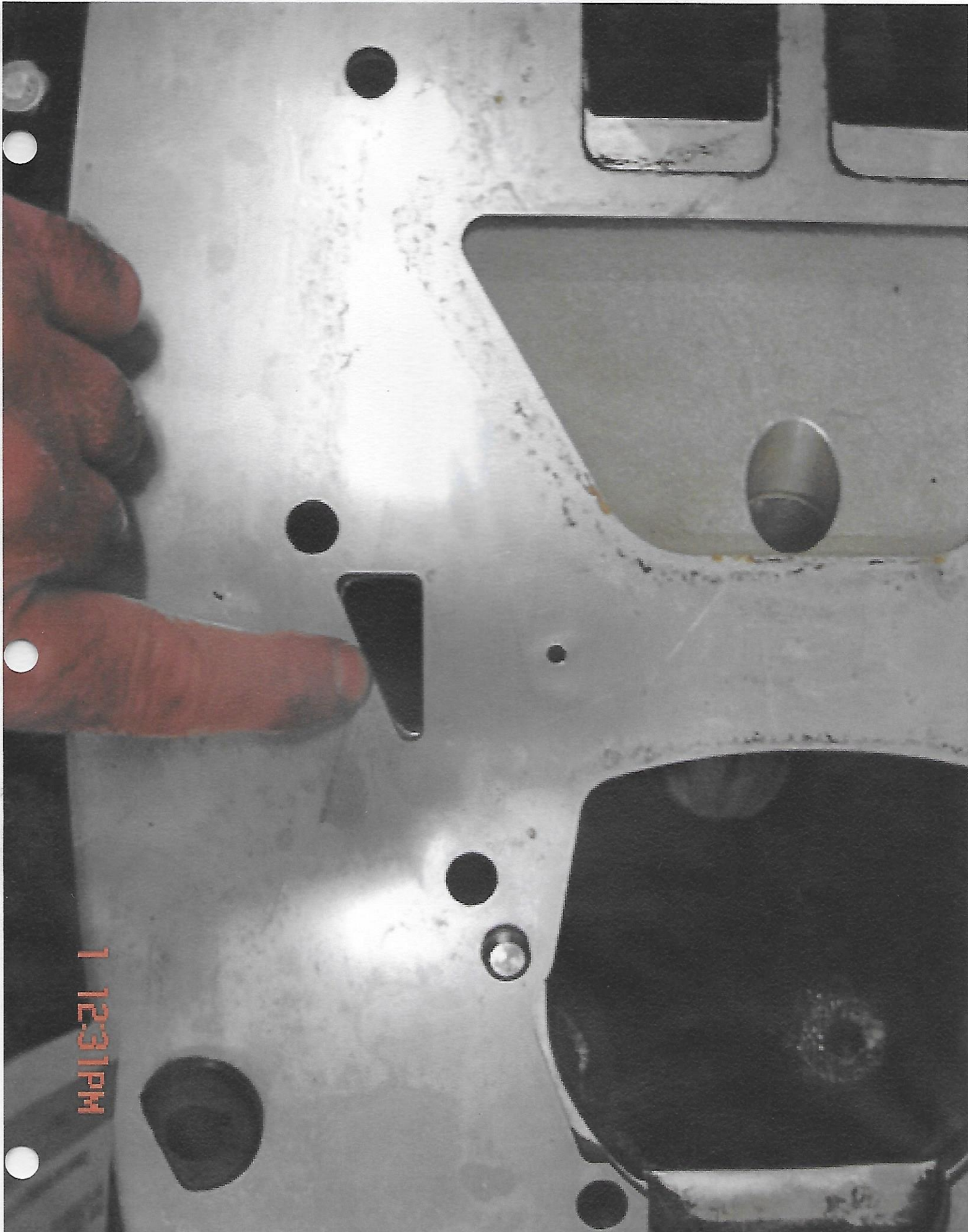
Date: 10/28.2009

Model Year: 2010

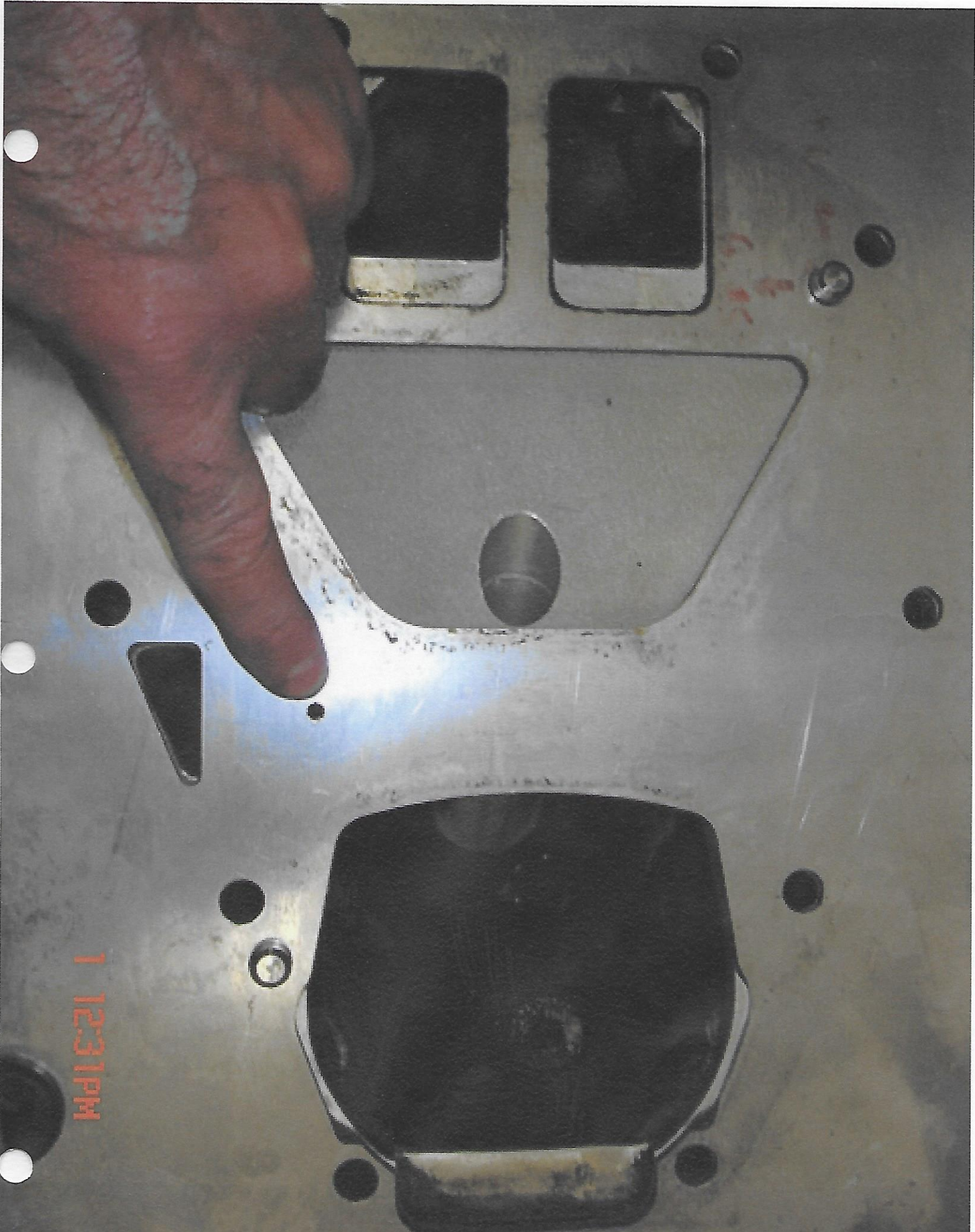
Manufacturer: Mercury Marine
Model: SST-200 XS
Page: 13



WARNING! FOR INSPECTION ONLY! These specifications are not intended as a guide for modification or “blueprinting” and are subject to change as needed.



1 12:31PM



1 12:31PM